

Lysophosphatidylcholine as a death effector in the lipoapoptosis of hepatocytes[§]

Myoung Sook Han,^{1,*} Sun Young Park,^{1,*} Koei Shinzawa,[†] Sunshin Kim,^{*} Kun Wook Chung,^{*} Ji-Hyun Lee,[§] Choon Hyuck Kwon,^{**} Kwang-Woong Lee,^{**} Joon-Hyoek Lee,^{*} Cheol Keun Park,^{††} Woo Jin Chung,^{§§} Jae Seok Hwang,^{§§} Ji-Jing Yan,^{***} Dong-Keun Song,^{***} Yoshihide Tsujimoto,[†] and Myung-Shik Lee^{2,*}

Departments of Medicine,^{*} Surgery,^{**} and Pathology,^{††} Samsung Medical Center, Sungkyunkwan University School of Medicine, Seoul 135-710, Korea; Laboratory of Molecular Genetics,[†] Department of Medical Genetics, Osaka University Medical School and Solution Oriented Research for Science and Technology (SORST) of the Japan Science and Technology Corporation, Osaka 565-1871, Japan; Samsung Biomedical Research Institute,[§] Seoul 135-710, Korea; Department of Medicine,^{§§} Keimyung University School of Medicine, Daegu 700-712, Korea; and Department of Pharmacology,^{***} College of Medicine, Hallym University, Chunchon, Gangwon 200-702, Korea

Abstract The pathogenesis of nonalcoholic steatohepatitis (NASH) is unclear, despite epidemiological data implicating FFAs. We studied the pathogenesis of NASH using lipoapoptosis models. Palmitic acid (PA) induced classical apoptosis of hepatocytes. PA-induced lipoapoptosis was inhibited by acyl-CoA synthetase inhibitor but not by ceramide synthesis inhibitors, suggesting that conversion products other than ceramide are involved. Phospholipase A₂ (PLA₂) inhibitors blocked PA-induced hepatocyte death, suggesting an important role for PLA₂ and its product lysophosphatidylcholine (LPC). Small interfering RNA for Ca²⁺-independent phospholipase A₂ (iPLA₂) inhibited the lipoapoptosis of hepatocytes. PA increased LPC content, which was reversed by iPLA₂ inhibitors. Pertussis toxin or dominant-negative G α_i mutant inhibited hepatocyte death by PA or LPC acting through G-protein-coupled receptor (GPCR)/G α_i . PA decreased cardiolipin content and induced mitochondrial potential loss and cytochrome *c* translocation. Oleic acid inhibited PA-induced hepatocyte death by diverting PA to triglyceride and decreasing LPC content, suggesting that FFAs lead to steatosis or lipoapoptosis according to the abundance of saturated/unsaturated FFAs. LPC administration induced hepatitis in vivo. LPC content was increased in the liver specimens from NASH patients. **§** These results demonstrate that LPC is a death effector in the lipoapoptosis of hepatocytes and suggest potential therapeutic values of PLA₂ inhibitors or GPCR/G α_i inhibitors in NASH.—Han, M. S., S. Y. Park, K. Shinzawa, S. Kim, K. W. Chung, J-H. Lee, C. H. Kwon, K-W. Lee, J-H. Lee, C. K. Park, W. J. Chung, J. S. Hwang, J-J. Yan, D-K. Song, Y. Tsujimoto, and M-S. Lee. **Lysophosphatidylcholine as a death effector in the lipoapoptosis of hepatocytes.** *J. Lipid Res.* 2008. 49: 84–97.

Supplementary key words fatty acids • phospholipase A₂ • steatohepatitis • triglyceride • ceramide

Nonalcoholic fatty liver disease (NAFLD) is characterized by lipid deposition in hepatocytes without alcohol abuse (1). Nonalcoholic steatohepatitis (NASH) is a severe form of NAFLD accompanied by necrosis, inflammation, and fibrosis (2). Although steatosis alone is nonprogressive, 20% of NASH progresses to cirrhosis (1). The pathogenesis of NAFLD is not clearly understood and may entail multiple injuries from increased FFAs, oxidative stress, lipid peroxidation, and tumor necrosis factor- α (1, 3).

NAFLD is frequently associated with type 2 diabetes, obesity, and insulin resistance, which constitute important components of the metabolic syndrome (2). FFAs released

Abbreviations: A₆₃₀, absorption at 630 nm; ALT, alanine aminotransferase; AST, aspartate aminotransferase; BEL, bromoenol lactone; cPLA₂, cytoplasmic phospholipase A₂; DAG, diacylglycerol; GPCR, G-protein-coupled receptor; iPLA₂, Ca²⁺-independent phospholipase A₂; JNK, c-Jun N-terminal kinase; LPA, lysophosphatidic acid; LPC, lysophosphatidylcholine; LPE, lysophosphatidylethanolamine; LPG, lysophosphatidylglycerol; LPI, lysophosphatidylinositol; LPS, lysophosphatidylserine; MAFP, methyl arachidonyl fluorophosphonate; MTT, 3-[4,5-dimethylthiazol-2-yl]-2,5-diphenyltetrazolium bromide; NAFLD, nonalcoholic fatty liver disease; NAO, 10-N-nonyl acridine orange; NASH, nonalcoholic steatohepatitis; OA, oleic acid; PA, palmitic acid; PACOCF₃, palmitoyl trifluoromethyl ketone; PC, phosphatidylcholine; PI, propidium iodide; PKC, protein kinase C; PLA₂, phospholipase A₂; PTX, pertussis toxin; siRNA, small interfering RNA; TG, triglyceride; TUNEL, terminal deoxynucleotidyl transferase mediated dUTP nick end labeling.

¹M. S. Han and S. Y. Park contributed equally to this work.

²To whom correspondence should be addressed.

e-mail: mslee@smc.samsung.co.kr

§ The online version of this article (available at <http://www.jlr.org>) contains supplementary data in the form of three figures.

Manuscript received 16 April 2007 and in revised form 14 September 2007 and in re-revised form 17 October 2007.

Published, *JLR Papers in Press*, October 18, 2007.
DOI 10.1194/jlr.M700184-JLR200

from visceral fat of obese subjects are strong culprits in insulin resistance. Recent papers have suggested a potential role for FFAs in insulin deficiency as well as in insulin resistance, consistent with FFA-mediated injury of pancreatic β -cells and several other tissues (4).

FFAs may be related to NAFLD through their increased flux from visceral fat to the liver. Because of strong epidemiological and in vivo data suggesting the relationship between FFAs and NAFLD, several in vitro experiments studying hepatocyte injury by FFAs have been conducted, which suggested possible roles for the mitochondrial pathway, lysosomal pathway, endoplasmic reticulum stress, and c-Jun N-terminal kinase (JNK) activation in the lipooptosis of hepatocytes (5–9). However, the intracellular metabolites of FFAs that are directly responsible for such intracellular events are not clearly identified. We found evidence supporting the role of lysophosphatidylcholine (LPC) produced by phospholipase A_2 (PLA $_2$), which catalyzes the hydrolysis of the fatty acyl ester bond at the *sn*-2 position of glycerophospholipids and has been implicated in several types of cell death (10–13), as an effector in the lipooptosis of hepatocytes (Fig. 1).

Cell death assay

Chang cells grown in DMEM-10% FBS were treated with FFAs or other reagents for 24 h unless stated otherwise. We chose a 24 h treatment protocol because our time course study revealed that cell death >50% with full-blown features of apoptosis, such as nuclear condensation/fragmentation and sub-G1 DNA peak, occurred at 24 h after treatment. Palmitic acid (PA) solution was made according to a previously published protocol with modifications (14). Briefly, PA stock solution (50 mM) was prepared by dissolving in 70% ethanol and heating at 50°C. Working PA solution was made by diluting stock solution in 2% fatty acid-free BSA-DMEM-10% FBS, because the concentration of FFAs, particularly that of PA, is quite low in 10% FBS, whereas cells were healthier with serum for prolonged experiments. 3-[4,5-Dimethylthiazol-2-yl]-2,5-diphenyltetrazolium bromide (MTT) assay, Hoechst 33258/propidium iodide (PI) staining, and DNA ploidy analysis were conducted as described (15). We used the MTT assay throughout the study because the results from the MTT assay were consistent with those of other cell death assays such as Hoechst/PI staining or DNA ploidy analysis in our pilot study. In some experiments, cells were pretreated with inhibitors for 1 h before PA treatment. To assess the death of primary murine hepatocytes, a lactate dehydrogenase release assay was used (12). Percentage cell death was calculated as (experimental release – spontaneous release)/(total release – spontaneous release) \times 100.

Ammonia removal

Ammonia concentration in the culture supernatant was measured using a commercial kit (Asan Pharmaceuticals). Briefly, cells were incubated in a medium containing test reagents and 2 mM NH_4Cl for 48 h. The absorption at 630 nm (A_{630}) by indophenol generated from ammonia was measured. Percentage removal was calculated as $[1 - (A_{630} \text{ with added ammonia to the$

MATERIALS AND METHODS

Reagents

Palmitoyl trifluoromethyl ketone (PACOCF $_3$) and methyl arachidonyl fluorophosphonate (MAFP) were from Calbiochem. zVAD-fmk was from Enzyme Systems (Livermore). All other chemicals were obtained from Sigma unless stated otherwise.

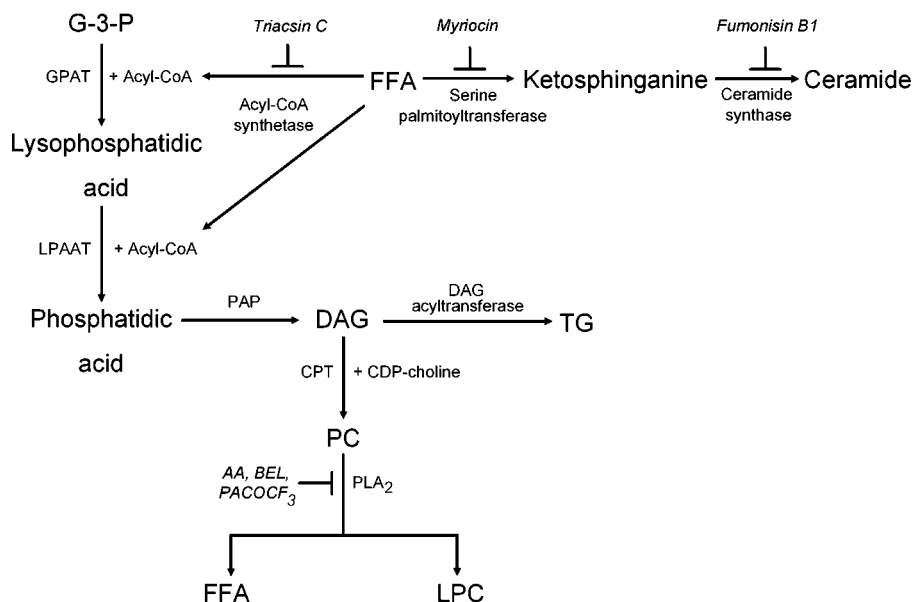


Fig. 1. Metabolism of FFAs. FFAs may be incorporated into ceramide, which could be an important death effector, or into diacylglycerol (DAG), which could be converted to lysophosphatidylcholine (LPC) or triglyceride (TG). AA, aristolochic acid; BEL, bromoenol lactone; CPT, CDP-choline:1,2-DAG phosphocholine transferase; G-3-P, glycerol-3-phosphate; GPAT, glycerophosphate acyltransferase; LPAAT, lysophosphatidic acid acyltransferase; PAP, phosphatidic acid phosphohydrolase; PC, phosphatidylcholine; PACOCF $_3$, palmitoyl trifluoromethyl ketone; PLA $_2$, phospholipase A_2 .

cells – basal A₆₃₀ of the cells)/(A₆₃₀ with added ammonia to the blank – basal A₆₃₀ of the blank)].

Small interfering RNA and RT-PCR

Small interfering RNAs (siRNAs) for human Ca²⁺-independent phospholipase A₂ β (iPLA₂β) (AAT TGC GCG GAG AAC GAG GAG), iPLA₂γ (AAA ATG AAC ATT TCC GGG ACA), and an irrelevant siRNA purchased from Invitrogen were transfected using Oligofectamine (Invitrogen) according to the manufacturer's protocol. Expression of iPLA₂β and iPLA₂γ at the RNA level was determined by RT-PCR using specific primer sets. Expression of markers for hepatocytes was also tested by RT-PCR using specific primer sets (16).

Measurement of LPC

Intracellular LPC content was measured using an enzymatic assay reported previously (17). Briefly, sample was added to the mixture of 100 mM Tris-HCl, pH 8.0, 0.01% Triton X-100, 1 mM CaCl₂, 3 mM *N*-ethyl-*N*-[2-hydroxy-3-sulfopropyl]3-methylaniline, 10 U/ml peroxidase, 0.1 U/ml glycerophosphorylcholine phosphodiesterase, and 10 U/ml choline oxidase. After incubation at 37°C for 5 min, reagent mixture containing 100 mM Tris-HCl, pH 8.0, 5 mM 4-aminoantipyrine, 0.01% Triton X-100, and 20 U/ml lysophospholipase was added. After incubation for another 5 min, A₅₇₀ was measured using LPC 16:0 as a standard.

Transfection

Chang cells stably expressing a dominant-negative Gα_{i2} mutant (α_{i2}G203T) (18) or wild-type Gα_{i2} (University of Missouri-Rolla cDNA Resource Center) were produced by transfection with FuGENE 6 (Roche) and selection with G418 for 3 weeks.

Mitochondrial events

After incubating cells with 0.4 μM 10-*N*-nonyl acridine orange (NAO; Molecular Probes) at 37°C, NAO fluorescence was measured by flow cytometry (19). Mitochondrial potential was measured by calculating A₅₉₀/A₅₃₀ after incubating cells with 10 μg/ml JC-1 (Molecular Probes) for 10 min (20).

Cell fractionation

Cells lysed in an isotonic buffer were fractionated as described (20). The heavy membrane fraction and cytosolic fraction were subjected to Western blotting using specific antibodies against cytochrome *c* (PharMingen) or Bid (Santa Cruz) (15). The purity of the heavy membrane and cytosolic fractions was confirmed by Western blotting using anti-Cox4 and anti-IκB antibody, respectively. Expression of phosphorylated JNK and total JNK in the whole cell lysate was studied by Western blotting using specific antibodies (Cell Signaling).

Oil Red O staining

Cells were fixed with 10% formaldehyde for 1 h. After staining with 3 μg/ml Oil Red O solution for 15 min, dye was extracted by isopropanol and A₅₄₀ was measured.

Human liver biopsy

Human liver tissue was obtained from the nontumor part of the livers from patients undergoing hepatic resection for metastatic colon cancer at Samsung Medical Center. The absence of cancer and cirrhosis was confirmed grossly and microscopically. The isolation of hepatocytes was performed using a two-step collagenase perfusion technique as described previously (21). After isolation, primary hepatocytes were cultured in a modi-

fied hormonally defined medium (William's E medium supplemented with 20 μg/l epidermal growth factor, 10 mg/l insulin, 1.7 mg/l hydrocortisone, 24.97 μg/l CuSO₄·5H₂O, 14.38 pg/l ZnSO₄·7H₂O, 3 μg/l H₂SeO₃, 50 mg/l linoleic acid, 1.05 g/l NaHCO₃, and 1.19 g/l HEPES) (22). Aspartate aminotransferase/alanine aminotransferase (AST/ALT) levels were measured using the FPC 3000 Blood Chemistry Analyzer (Fuji). Ultrasonography-guided liver biopsy was conducted in patients with clinical findings compatible with NAFLD without history of alcoholism (alcohol consumption < 140 g/week) using 18-gauge Solco needles inserted through the intercostal space. All patients had serum AST/ALT levels > 60 U/l and body mass index > 25 without recent history of diet control or parenteral nutrition. All were negative for viral markers, autoantibodies related to liver diseases, clinical evidence of cirrhosis, lipodystrophy, or Wilson's disease, and were not taking drugs related to lipid metabolism. Informed consent was obtained from all participants. All human studies were approved by the Institutional Review Board of Samsung Medical Center. An experienced hepatopathologist blinded to subject details scored the liver biopsy specimens according to a published classification (2).

Terminal deoxynucleotidyl transferase mediated dUTP nick end labeling staining

Terminal deoxynucleotidyl transferase mediated dUTP nick end labeling (TUNEL) staining of mouse liver tissues was conducted as described (15). Briefly, formalin-fixed sections were deparaffinized and microwaved in 0.01 M sodium citrate buffer (pH 6.0) and 0.1% Triton X-100. They were incubated with TUNEL reagents (Roche Molecular Biochemicals) at 37°C for 60 min. After washing, they were further incubated with Convert-POD for 30 min. Diaminobenzidine was used as a color substrate.

Mouse hepatocytes

Primary murine hepatocytes were isolated from C57BL/6 mice using the retrograde two-step collagenase perfusion technique (23). LPC (kindly provided by K-S. Song, Doosan Pharmaceutical; purity > 99%) dissolved in PBS-2% BSA by sonication was injected into the tail vein of ICR mice. All animal experiments were conducted in accordance with the institutional guidelines of the Osaka University Animal Facility and the Samsung Medical Center Animal Facility.

Measurement of iPLA₂ activity

Activity of iPLA₂ was measured using a commercial kit (Cayman) with modifications (24). Briefly, cells were collected with a cell scraper, sonicated, and centrifuged at 20,000 *g* at 4°C for 20 min. The supernatant was removed, and the concentration of proteins was determined. iPLA₂ activity was assayed by incubating the samples with arachidonoyl thio-PC for 1 h at 25°C in a Ca²⁺-free buffer (300 mM NaCl, 0.5% Triton X-100, 60% glycerol, 4 mM EGTA, 10 mM HEPES, pH 7.4, and 2 mg/ml BSA). The reaction was terminated by adding 5,5'-dithio-bis-2-nitrobenzoic acid for 5 min, and A₄₀₅ was measured. The specific activity of iPLA₂ was calculated and expressed as absorbance per milligram of protein. The background activity was subtracted from all readings.

Statistical analysis

All values are expressed as means ± SD from more than three independent experiments performed in triplicate. Two-tailed Student's *t*-test was used to compare values between two groups. ANOVA was used for multiple comparisons. The Scheffé test was used to compare two groups once ANOVA showed significant differences. *P* < 0.05 were considered to represent statistically significant differences.

RESULTS

Apoptosis of Chang liver cells by FFAs

We studied the effect of PA, the most abundant saturated fatty acid in vivo, on the Chang "normal" hepatocyte line. We chose Chang cells because they represent a more physiological system as nonmalignant human hepatocytes compared with hepatoma cells (25). RT-PCR analysis showed that Chang cells expressed markers for hepatocytes such as α -fetoprotein, ALT, phosphoenolpyruvate carboxykinase, albumin, tryptophan 2,3-dioxygenase, cytochrome enzymes (Cyp7A1, Cyp3A4), α -1-antitrypsin, and cytokeratin 8 (Fig. 2A) (16). Furthermore, Chang cells cleared 78.8% of added NH_4Cl , which was significantly higher than the clearance by control HeLa cells (8.0%) ($P < 0.05$) (Fig. 2A), suggesting that Chang cells represent authentic hepatocytes. PA induced Chang cell death, as assessed by MTT assay (Fig. 2B). Hoechst/PI staining demonstrated that Chang cell death by PA was a classical apoptosis characterized by nuclear condensation/fragmentation (Fig. 2C). Sub-G1 DNA peak was also observed by DNA ploidy analysis (Fig. 2D). A time course study showed that cell death $>50\%$ occurred at 24 h after treatment (Fig. 2E).

Because lipid intermediates produced from PA, such as ceramide, are well-known inducers of apoptosis (26), we investigated whether agents inhibiting the conversion of PA to lipid intermediates could affect Chang cell lipoapoptosis. Triacsin C, which inhibits acyl-CoA synthetase, the first enzyme in the conversion of PA to lipid intermediates through palmitoyl-CoA (27) (Fig. 1), effectively blocked Chang cell death by PA, suggesting that conversion products of PA but not PA itself induce lipoapoptosis ($P < 0.000005$) (Fig. 2F). We then studied the effect of fumonisin B1, which blocks ceramide synthesis by inhibiting sphingosine *N*-acyltransferase (Fig. 1) (28). Contrary to our expectation, fumonisin B1 did not affect Chang cell death by PA (Fig. 2G). Because this finding was inconsistent with previous reports by others using pancreatic islet cells (4), we next studied the effect of myriocin, which blocks the synthesis of ceramide/sphingosine by inhibiting serine palmitoyltransferase (29) (Fig. 1). Myriocin also did not inhibit Chang cell death by PA (Fig. 2H), suggesting that the conversion of FFAs to lipid intermediates in the sphingolipid-ceramide pathway and finally to ceramide is not involved in the lipoapoptosis of hepatocytes.

We next explored the possible involvement of protein kinase C (PKC) in Chang cell lipoapoptosis, because recent papers showed a role for PKC activation in apoptosis (30) and that PKC activators such as diacylglycerol (DAG) and LPC can be synthesized from palmitoyl-CoA (31) (Fig. 1). Both calphostin C and GF109203X, well-known PKC inhibitors, significantly attenuated Chang cell death by PA, supporting a role for PKC in Chang cell lipoapoptosis ($P < 0.000005$ for both) (see supplementary Fig. I).

Roles of PLA_2 and LPC in lipoapoptosis

We next studied the possible role of PLA_2 in Chang cell lipoapoptosis, because PLA_2 is involved in several cell

death models (12, 13) and phosphatidylcholine (PC), a conversion product of DAG, can be a substrate for PLA_2 , leading to the production of LPC, another PKC activator (Fig. 1). Intriguingly, aristolochic acid, a general inhibitor of PLA_2 , and bromoenol lactone (BEL), a specific inhibitor of iPLA_2 (12, 13), markedly inhibited Chang cell death by PA, suggesting important roles for PLA_2 and the conversion products of PA downstream of PLA_2 , rather than of DAG upstream of PLA_2 , in lipoapoptosis and PKC activation ($P < 0.0001$ and 0.00005 , respectively) (Fig. 3A). Because these results also suggested the possible involvement of iPLA_2 among diverse PLA_2 members, we used other PLA_2 inhibitors that are specific for each type of PLA_2 . PACOCF₃, another iPLA_2 -specific inhibitor of a different class (12, 32), dramatically blocked Chang cell death by PA ($P < 0.00005$). MAFP, an inhibitor of cytoplasmic phospholipase A₂ (c PLA_2) (12), also significantly blocked Chang cell death by PA ($P < 0.005$). However, the protection by the maximum tolerable MAFP level was less compared with that by PACOCF₃ ($P < 0.005$), suggesting that iPLA_2 rather than c PLA_2 is involved in the lipoapoptosis of hepatocytes (Fig. 3B). Consistent with these pharmacological data, iPLA_2 activity was increased significantly after treatment of Chang cells with PA ($P < 0.05$), which was inhibited by BEL ($P < 0.01$) (see supplementary Fig. II).

To confirm the role of iPLA_2 , we conducted an RNA interference experiment. Transfection of siRNA for $\text{iPLA}_2\beta$ or $\text{iPLA}_2\gamma$, two major types of iPLA_2 , significantly attenuated Chang cell death by PA, substantiating the roles of iPLA_2 in lipoapoptosis ($P < 0.00005$ for both comparisons) (Fig. 3C). Transfection of $\text{iPLA}_2\beta$ and $\text{iPLA}_2\gamma$ siRNA markedly decreased the expression of $\text{iPLA}_2\beta$ and $\text{iPLA}_2\gamma$, respectively, at the RNA level (Fig. 3D). However, the combination of both siRNAs did not induce a further decrease in lipoapoptosis (Fig. 3C).

Next, we studied whether LPC, which is liberated from PC by PLA_2 as the most abundant lysophospholipid in vivo, could indeed be produced from PA. Intracellular LPC content was increased significantly by PA ($P < 0.01$), and the LPC content after PA treatment was attenuated significantly by BEL ($P < 0.05$) (Fig. 3E). In contrast, LPC content in the culture supernatant was not increased after treatment of Chang cells with PA (see supplementary Fig. III). Treatment of Chang cells with exogenous palmitoyl-LPC (~ 10 – $50 \mu\text{M}$) for 24 h also induced significant cell death in a dose-dependent manner ($P < 0.000001$) (Fig. 3F).

We next tested the effect of pertussis toxin (PTX) on Chang cell lipoapoptosis, because PTX inhibits LPC signaling through G-protein-coupled receptor (GPCR)/ $\text{G}\alpha_i$ (33, 34). PTX (~ 100 – 400 ng/ml) remarkably inhibited Chang cell death by exogenous LPC or PA ($P < 0.00005$ and 0.000000005 , respectively) (Fig. 3F). We further studied the role of GPCR/ $\text{G}\alpha_i$ in lipoapoptosis by transfecting a dominant-negative mutant of $\text{G}\alpha_i$ ($\alpha_{i2}\text{G203T}$) (18). Stable Chang cell transfectants expressing $\alpha_{i2}\text{G203T}$ were resistant to death by PA or LPC, strongly supporting the role of LPC and GPCR/ $\text{G}\alpha_i$ in lipoapoptosis of Chang cells (Fig. 3G). Transfection with a control wild-type $\text{G}\alpha_{i2}$ did

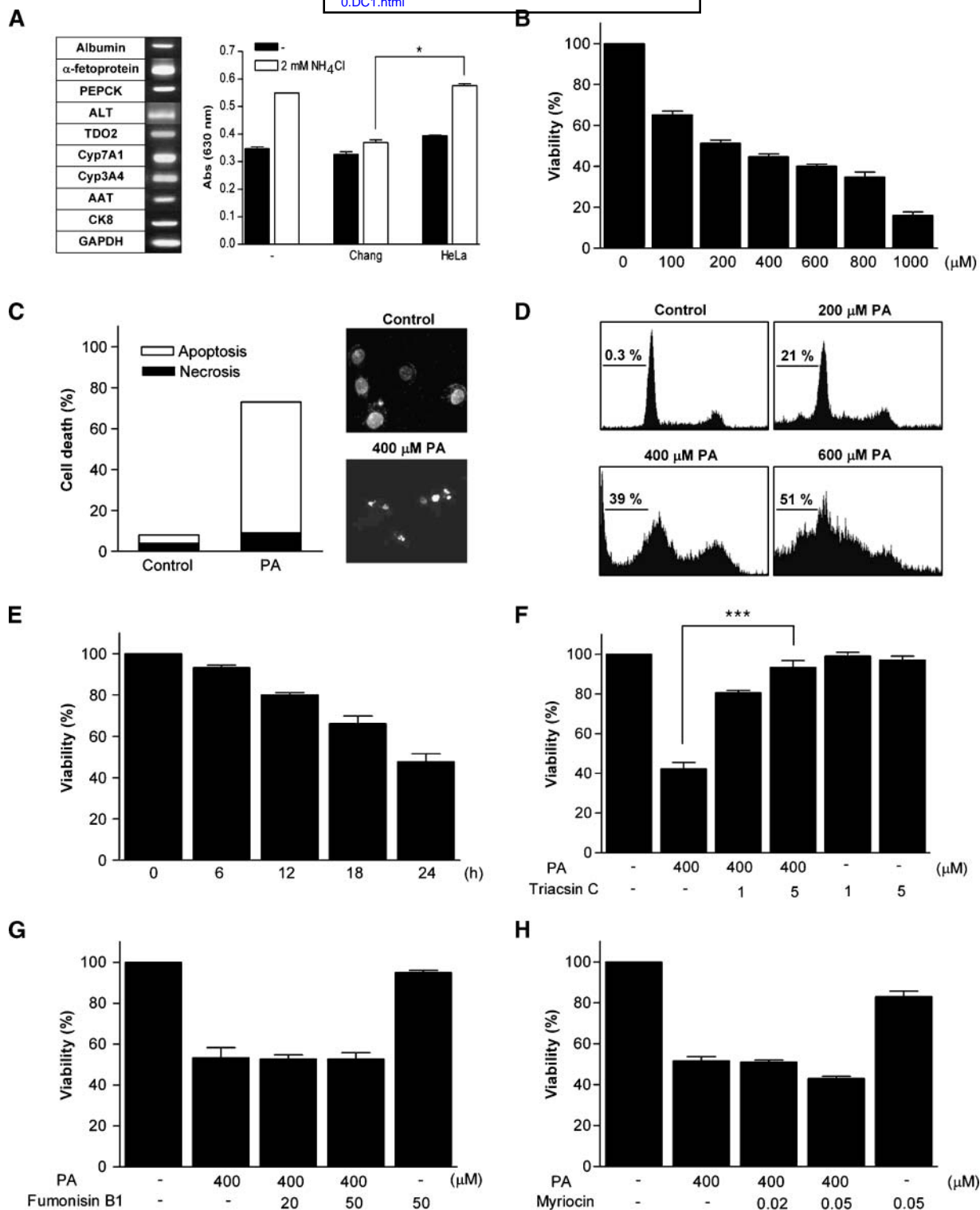


Fig. 2. Apoptosis of Chang liver cells by palmitic acid (PA). A: RT-PCR was conducted using RNA extracted from Chang “normal” liver cells and primers specific for various hepatocyte markers. Removal of exogenous ammonia by Chang cells or control HeLa cells was measured. AAT, α-1-antitrypsin; ALT, alanine aminotransferase; CK8, cytokeratin 8; PEPCK, phosphoenolpyruvate carboxykinase; TDO2, tryptophan 2,3-dioxygenase. B: Chang cells were treated with PA for 24 h, and 3-[4,5-dimethylthiazol-2-yl]-2,5-diphenyltetrazolium bromide (MTT) assay was conducted. C: After the same treatment as in B, Hoechst/propidium iodide (PI) double staining was performed, and the number of cells showing nuclear condensation/fragmentation was counted. D: After the same treatment as in B, DNA ploidy assay was conducted using PI staining followed by flow cytometric analysis. The percentage of cells showing sub-G1 peak was calculated as a measure of nuclear fragmentation. E: Chang cells were treated with PA for the indicated time periods, and MTT assay was performed. More than 50% of the cells died after treatment with 400 μM PA for 24 h. F: After pretreatment with triacsin C, an inhibitor of acyl-CoA synthetase, Chang cells were treated with PA for MTT assay. G, H: After pretreatment with fumonisin B1 or myriocin, inhibitors of ceramide synthesis, Chang cells were treated with PA. Values shown are means ± SD. * $P < 0.05$, *** $P < 0.001$.

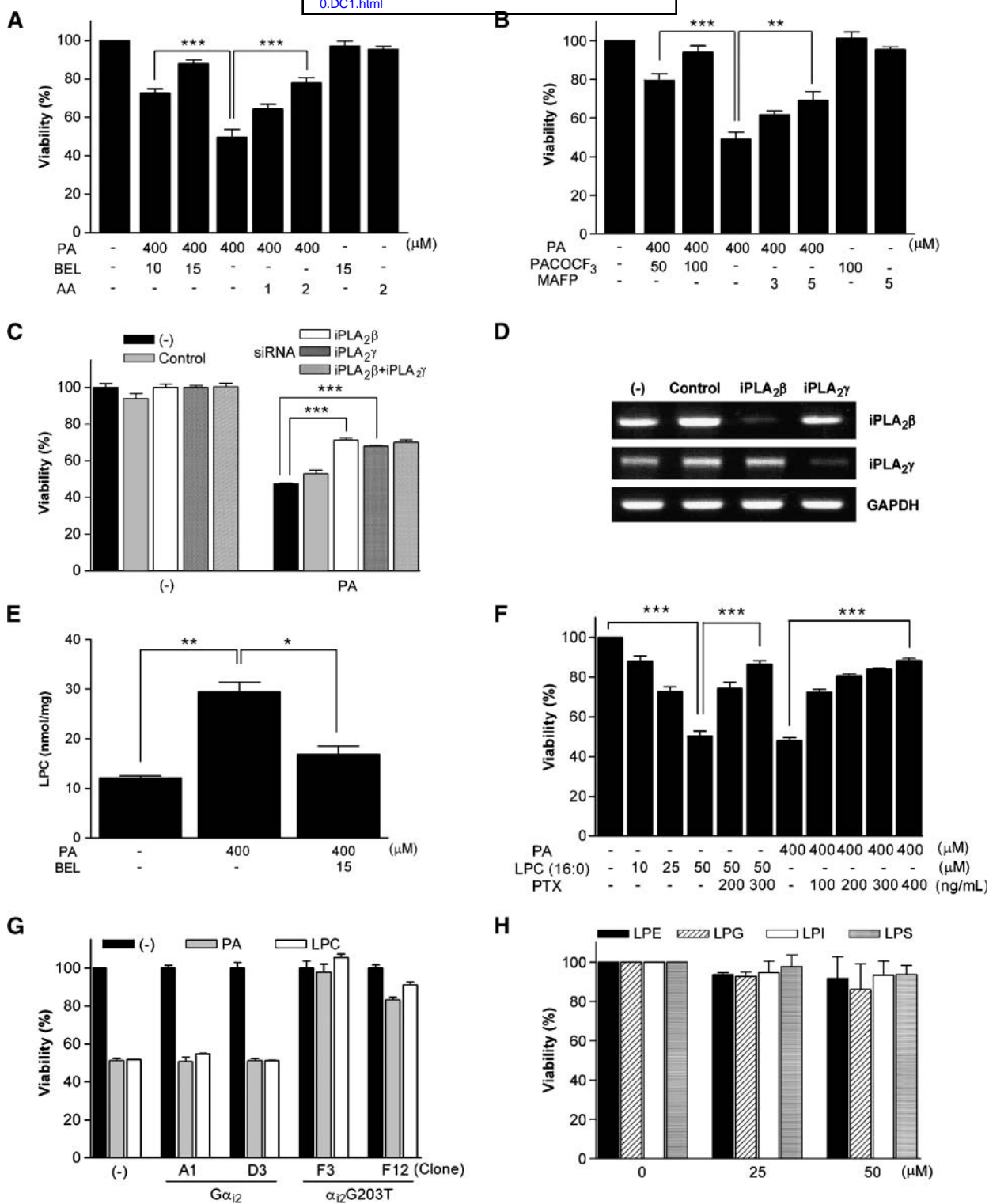


Fig. 3. Role of the PLA₂/LPC pathway in the lipoapoptosis of hepatocytes. **A:** After pretreatment with aristolochic acid (AA), a general inhibitor of PLA₂, or BEL, an inhibitor of Ca²⁺-independent phospholipase A₂ (iPLA₂), Chang cells were treated with PA. After 24 h of incubation, MTT assay was done. **B:** Chang cells were pretreated with PACOCF₃, another iPLA₂-specific inhibitor, or methyl arachidonyl fluorophosphonate (MAFP), a cytoplasmic phospholipase A₂-specific inhibitor, before treatment with PA. The inhibition of lipoapoptosis by MAFP was less pronounced than that with PACOCF₃. **C:** Chang cells were transfected with iPLA₂β and/or iPLA₂γ small interfering RNA (siRNA) before treatment with PA. An irrelevant siRNA served as a control. **D:** Expression of iPLA₂β and iPLA₂γ in siRNA-transfected cells was examined by RT-PCR. **E:** After PA treatment with or without BEL pretreatment, intracellular LPC content in Chang cells was measured by an enzymatic assay. **F:** Chang cells were treated with exogenous LPC or PA with or without pertussis toxin (PTX) pretreatment, and cell viability was measured by MTT assay. **G:** Stable transfectants expressing wild-type Gα₁₂ (A1, D3) or a dominant-negative Gα₁₂ mutant (F3, F12) were produced by transfection with FuGENE 6 and G418 selection. They were treated with PA or LPC, and MTT assay was done. **H:** Chang cells were treated with minor products of iPLA₂ for 48 h. Values shown are means ± SD. * *P* < 0.05, ** *P* < 0.01, *** *P* < 0.001.

not significantly affect Chang cell death by PA or LPC, probably because of endogenous expression of $G\alpha_i$. We next examined the effect of other lysophospholipids that exist in vivo at much lower concentrations compared with LPC but that could be affected by PLA₂ inhibitors. Lysophosphatidylethanolamine (LPE), lysophosphatidylglycerol (LPG), lysophosphatidylinositol (LPI), or lysophosphatidylserine (LPS) up to 50 μ M, which is much higher than their physiological concentrations, induced negligible cell death even at 48 h after treatment, suggesting that the effects of PLA₂ inhibitors are most likely through LPC (Fig. 3H).

We next studied intracellular events associated with lipoapoptosis. We measured the intracellular content of cardiolipin, which is crucial for cytochrome *c* binding to the mitochondrial inner membrane as a mitochondria-specific phospholipid and could be affected by FFA treatment. Cardiolipin content measured by NAO fluorescence began to decrease at \sim 3–6 h after PA treatment and decreased further at \sim 12–24 h after treatment (Fig. 4A). The PA-induced decrease in cardiolipin content was attenuated significantly by iPLA₂ inhibitors such as BEL and PACOCF₃, suggesting important roles for PLA₂ or LPC in the decrease of cardiolipin content and lipoapoptosis ($P < 0.0001$ and 0.0005 , respectively) (Fig. 4B). We also studied whether LPC could directly induce changes in Bid apart from its receptor-mediated effect, because previous papers reported that Bid could perturb mitochondrial membrane in association with LPC (35). Bid in the mitochondrial fraction was increased by PA treatment, which was inhibited by BEL (Fig. 4C), suggesting a possible role for full-length Bid in cell death by LPC, as reported (35). Probably because of the decrease in cardiolipin content and the increase in Bid in the mitochondria, cytochrome *c* was translocated from mitochondria to cytoplasm and mitochondrial potential was decreased between 3 and 24 h after PA treatment (Fig. 4D). Chang cell death by PA was inhibited significantly by a pancaspase inhibitor, zVAD-fmk, suggesting that effector caspases were activated downstream of cytochrome *c* translocation ($P < 0.000005$) (Fig. 4E). We also studied whether PA activates JNK, because LPC is a well-known activator of JNK (36). Treatment of Chang cells with PA induced JNK activation, which was inhibited by PACOCF₃, suggesting that LPC produced from PA is involved in JNK activation (Fig. 4F). Exogenous LPC also induced JNK activation in Chang cells, as expected (Fig. 4F). Stable Chang cell transfectants expressing dominant-negative α_2G203T mutant showed attenuated JNK activation after treatment with PA or LPC, suggesting that LPC produced from PA activates JNK through GPCR/ $G\alpha_i$ (Fig. 4G). SP600125 (\sim 10–20 μ M), a JNK inhibitor, induced a small but significant decrease in PA-induced death (\sim 25%) ($P < 0.005$), suggesting that JNK activation plays a certain role in the lipoapoptosis of Chang cells (Fig. 4H).

Inhibition of PA-induced lipoapoptosis by oleic acid

Because DAG can be converted to triglyceride (TG) (Fig. 1), we examined the role of TG in lipid injury. PA did not increase intracellular TG content, estimated by Oil

Red O staining followed by spectrophotometry or microscopic examination. In contrast, oleic acid (OA), the most abundant unsaturated fatty acid in vivo, markedly increased TG content. Treatment with OA in combination with PA further increased TG content (Fig. 5A, B).

Regarding cell viability, OA did not induce Chang cell death. On the contrary, OA significantly blocked Chang cell death by PA ($P < 0.00005$), similar to previous reports (37) (Fig. 5C). OA also abolished the increase in LPC content by PA treatment ($P < 0.00005$) (Fig. 5D), suggesting that increased FFAs lead to either steatosis of hepatocytes attributable to increased TG content or death of hepatocytes attributable to increased LPC content, depending on the absolute/relative abundance of saturated/unsaturated fatty acids (Fig. 1).

Effect of PA on primary hepatocytes

We next used primary hepatocytes instead of cell lines. Hoechst/PI staining showed that PA induced the death of primary human hepatocytes as well, which was a classical apoptosis characterized by nuclear condensation/fragmentation (Fig. 6A). Lipoapoptosis of primary human hepatocytes by PA was inhibited by BEL ($P < 0.0005$) but not by fumonisin B1 or myriocin, suggesting that the iPLA₂/LPC pathway rather than the ceramide pathway is crucial, similar to Chang cells (Fig. 6B, C). Exogenous LPC also induced the death of primary human hepatocytes, which was inhibited by PTX ($P < 0.0005$) (Fig. 6D). PTX also significantly blocked the death of primary human hepatocytes by PA, suggesting that endogenous LPC induces the death of primary human hepatocytes through GPCR/ $G\alpha_i$ ($P < 0.000001$) (Fig. 6D). OA attenuated the death of primary human hepatocytes by PA, supporting our hypothesis that unsaturated fatty acids divert saturated fatty acids into the TG pathway and attenuate primary human hepatocyte death by saturated fatty acids (Fig. 6E). Consistent with the death of primary human hepatocytes, PA induced the release of AST from cultured primary human hepatocytes, which was inhibited by BEL, PTX, or OA. LPC also induced AST release, which was blocked by PTX (Fig. 6F). PA induced the death of primary murine hepatocytes also, as assessed by lactate dehydrogenase release assay. Lipoapoptosis of primary murine hepatocytes by 750 μ M PA ($33.9 \pm 3.8\%$) was significantly inhibited by 30 μ M BEL ($26.4 \pm 3.6\%$), 100 μ M PACOCF₃ ($20.5 \pm 3.1\%$), or 300 ng/ml PTX ($26.9 \pm 1.4\%$) ($P < 0.05$, 0.01 , and 0.05 , respectively).

LPC content in NAFLD liver specimens

We next studied whether LPC is able to induce liver injury by directly injecting LPC in vivo. When 60 mg/kg LPC was administered to ICR mice through tail veins, AST/ALT levels were notably increased at 24 h after injection ($P < 0.005$ for both comparisons) (Fig. 7A). Hematoxylin and eosin and TUNEL staining of histological sections obtained at 3 days after LPC injection showed lobular hepatitis with a histological score of 1 (focal lytic necrosis, one focus or less per $\times 100$ field) without evidence of steatosis (38) and TUNEL⁺ apoptotic cells in the

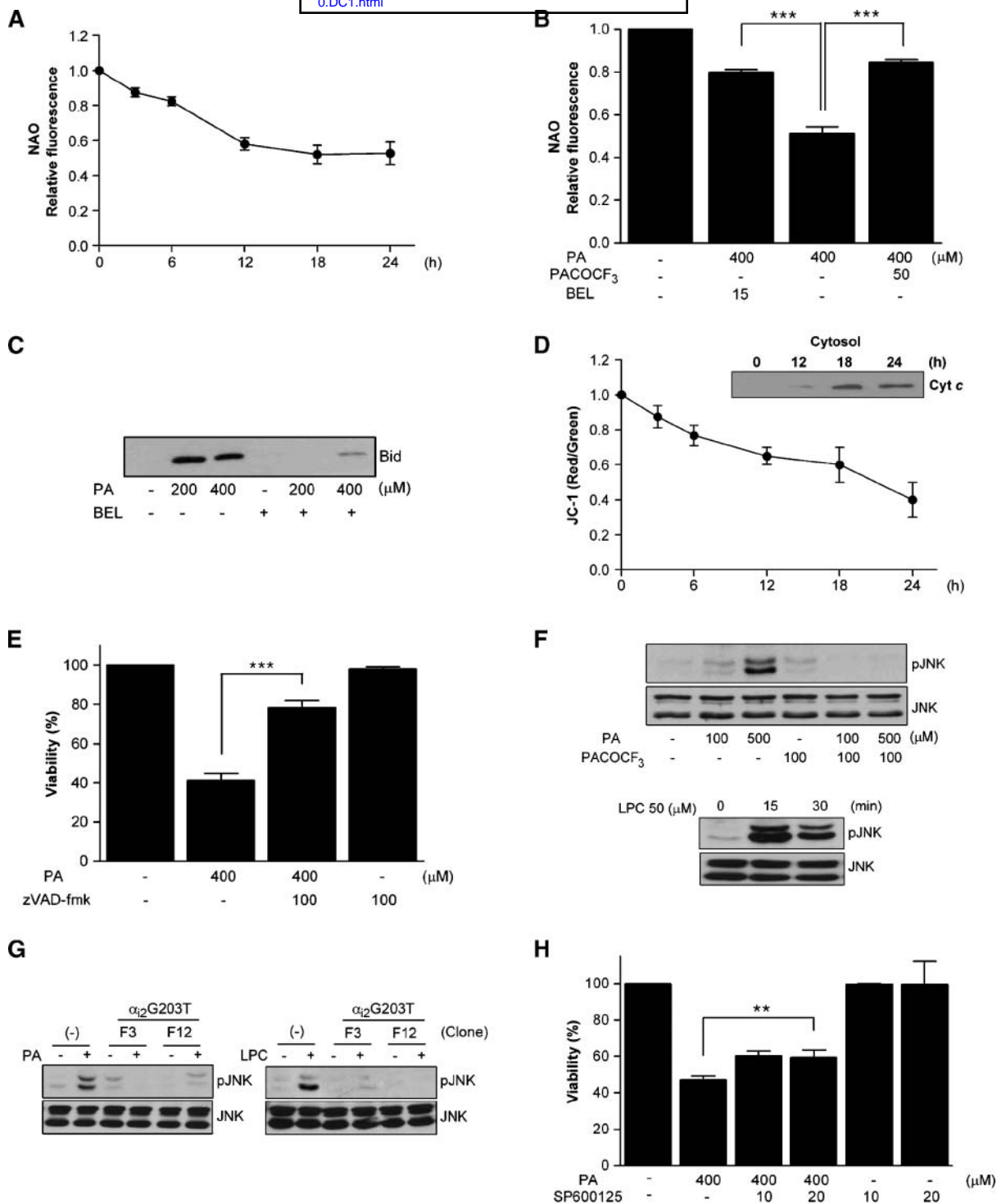


Fig. 4. Intracellular events associated with the lipooptosis of hepatocytes. **A:** Chang cells were treated with PA for the indicated time periods, and 10-*N*-nonyl acridine orange (NAO) fluorescence was determined by flow cytometry as a measure of mitochondrial cardiolipin content. **B:** Chang cells were treated with PA for 24 h after pretreatment with BEL or PACOCF₃, and NAO fluorescence was measured as in **A**. **C:** Chang cells were treated with PA with or without BEL pretreatment. After cell fractionation, the presence of Bid in the heavy membrane fraction was examined by Western blotting. **D:** Chang cells were treated with PA for the indicated time periods and then incubated with JC-1 for 10 min. Emission at 530 and 590 nm was measured, and absorption at 590 nm (A_{590})/ A_{530} was calculated as an indicator of mitochondrial potential. Treated cells were fractionated, and the presence of cytochrome *c* in the cytosolic fraction was examined by Western blotting (inset). **E:** Chang cells were treated with PA after pretreatment with zVAD-fmk, and MTT assay was done. **F:** Chang cells were treated with PA for 24 h with or without PACOCF₃ pretreatment, and cell lysate was subjected to Western blotting using antibodies specific for phosphorylated c-Jun N-terminal kinase (JNK) or total JNK (upper panel). Chang cells were also treated with LPC for the indicated time, and cell lysate was subjected to Western blotting (lower panel). **G:** Stable transfectants expressing dominant-negative Gα₁₂ mutant were treated with PA or LPC, and cell lysate was subjected to Western blotting as in **F**. **H:** Chang cells were treated with PA after pretreatment with SP600125, a JNK inhibitor, and MTT assay was done. Values shown are means ± SD. ** $P < 0.01$, *** $P < 0.001$.

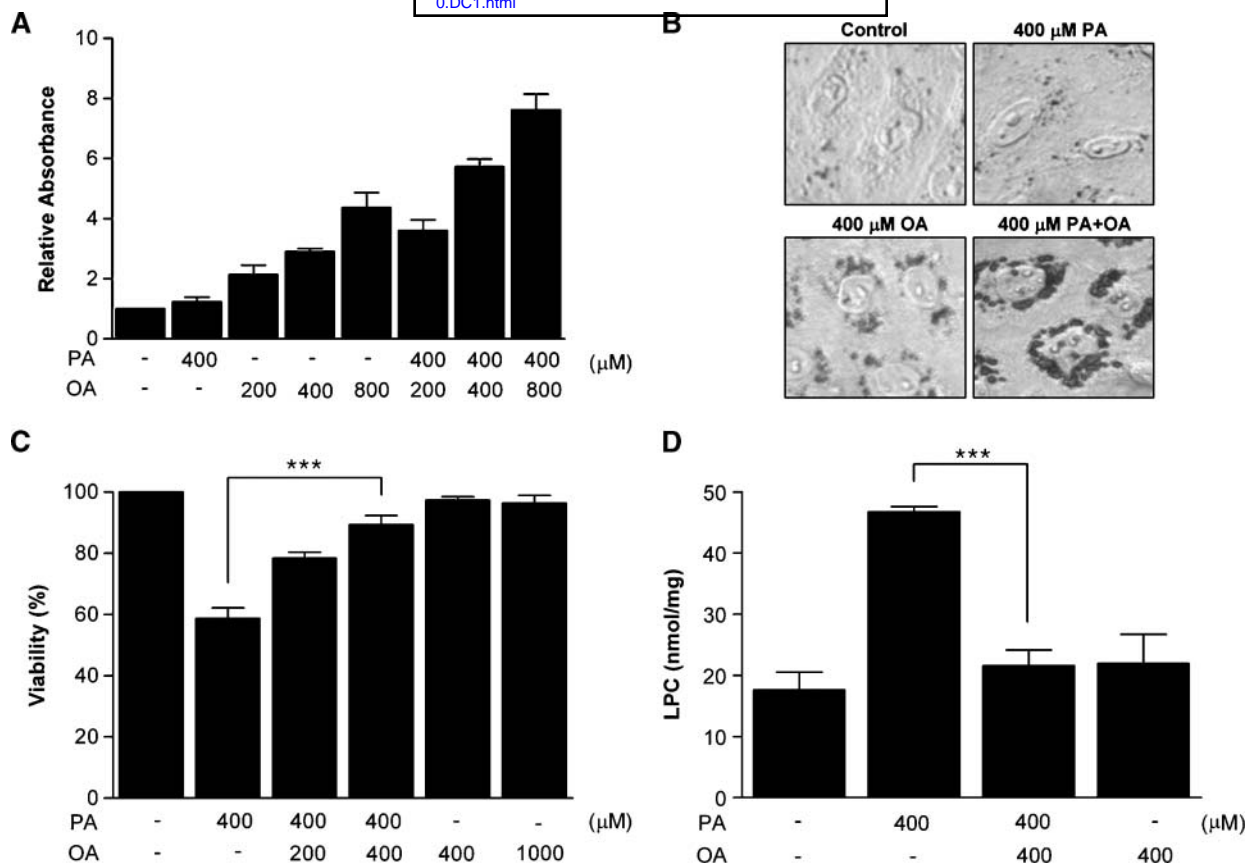


Fig. 5. Effect of unsaturated fatty acids on the lipoapoptosis of hepatocytes. A: Chang cells were treated with various combinations of saturated fatty acid (PA) and unsaturated fatty acid [oleic acid (OA)]. After Oil Red O staining and isopropanol extraction, A_{540} was measured to estimate intracellular TG content. B: After the same treatment and Oil Red O staining as in A, cells were observed with a light microscope. Treatment with OA but not with PA increased intracellular TG content. Combined OA/PA treatment further increased TG content. C: After treatment of Chang cells with various combinations of PA and OA, MTT assay was conducted. D: After the same treatment as in C, intracellular LPC content was measured by an enzymatic assay. Values shown are means \pm SD. *** $P < 0.001$.

area of hepatitis, respectively, supporting our hypothesis that LPC plays a role as a mediator of hepatocyte injury in vivo (Fig. 7B).

We finally measured LPC content in liver biopsy specimens. ANOVA revealed that LPC content in the liver specimens from patients with NAFLD was significantly higher than that in the nontumor part of the liver from patients with metastatic colon cancer ($P < 0.005$). LPC content in the liver specimens from patients with NASH (NAFLD class 3–4) appears to be higher compared with that from patients with NAFLD class 2 (lobular hepatitis only); however, the difference was not statistically significant by the Scheffé test ($P > 0.1$) (Fig. 7C).

DISCUSSION

We observed that PA induces the apoptosis of hepatocytes through conversion to LPC, which led to the activation of GPCR, mitochondrial events, and JNK (Fig. 8). Although Chang cells and primary hepatocytes from mice or human all underwent apoptosis after treatment with PA, the susceptibility to lipoapoptosis was different, which

could be attributable to differences in cell types, species, or the method of cell death assay. Although the identity of Chang cells has been questioned, recent papers have demonstrated the hepatocyte nature of Chang cells based on the expression of α -fetoprotein and albumin (39, 40), which was again supported by our results showing the expression of various markers for hepatocytes and the removal of ammonia by Chang cells. In contrast to our expectation, the conversion of PA to ceramide/sphingosine did not play a role in Chang cell lipoapoptosis, because both fumonisins B1 and myriocin inhibiting ceramide synthesis at two different steps did not block Chang cell lipoapoptosis. These results differ from previous findings suggesting essential roles for ceramide in the lipoapoptosis of pancreatic islet cells or hematopoietic cells (4, 41). However, papers reporting the ceramide-independent lipoapoptosis of various types of cells, including hepatocytes, have also been published (5, 7, 42, 43). These discrepancies might be attributable to differences in cell types or experimental conditions.

Instead of the ceramide pathway, conversion to DAG, PC, and then LPC appears to play an important role in Chang cell lipoapoptosis. Palmitoyl-CoA can be incorpo-

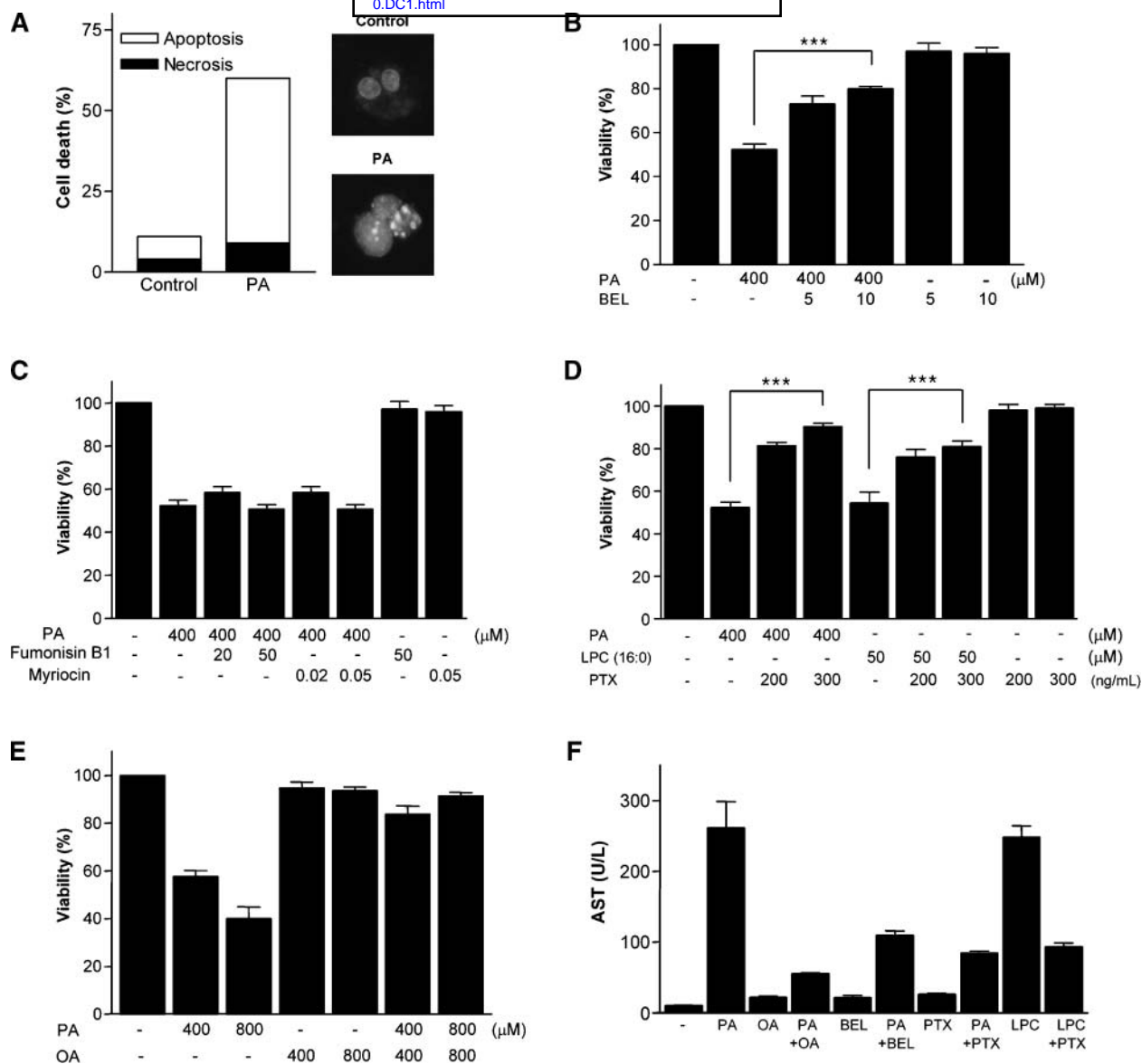


Fig. 6. Death of primary hepatocytes by PA. A: Primary human hepatocytes isolated by two-step collagenase perfusion were treated with PA for 24 h, and Hoechst/PI staining was conducted as in Fig. 2C. B: Primary human hepatocytes pretreated with BEL were incubated with PA as in Fig. 3A, and MTT assay was done. C: Primary human hepatocytes pretreated with fumonisin B1 or myriocin were incubated with PA as in Fig. 2G, H, and MTT assay was conducted. D: After pretreatment with PTX, primary human hepatocytes were treated with PA or exogenous LPC as in Fig. 3F. E: After treatment of primary human hepatocytes with various combinations of PA and OA, MTT assay was conducted as in Fig. 5C. F: After treatment of human primary hepatocytes with PA in the presence or absence of BEL, PTX, or OA, aspartate aminotransferase (AST) level in the supernatant was measured using a blood chemistry analyzer. Values shown are means \pm SD. *** $P < 0.001$.

rated to phosphatidic acid, which can be converted to DAG, a well-known PKC activator (30) (Fig. 1). Downstream of DAG, we noticed that DAG could be converted to PC and then to LPC, another PKC activator, by PLA₂ (44). Because PLA₂ participates in several cell death models (12, 13), we investigated whether PLA₂ is involved in the lipoapoptosis of hepatocytes. Our results showing a remarkable inhibition of Chang cell lipoapoptosis by BEL or PACOCF₃ suggest the involvement of iPLA₂ and LPC rather than DAG upstream of PLA₂. Although BEL has been reported to inhibit phosphatidic acid phosphohydrolase in addition to iPLA₂ (24), our finding that another

iPLA₂-specific inhibitor, PACOCF₃, which is structurally unrelated to BEL (24), dramatically inhibited Chang cell death by PA suggests that iPLA₂ plays a critical role in lipoapoptosis. Moreover, LPC content was increased significantly after PA treatment of Chang cells and reverted to a normal level with BEL, suggesting an important role of LPC as a death effector in PA-induced lipoapoptosis. However, it is not clear which among several types of iPLA₂ that could be inhibited by BEL (45, 46) is responsible for the lipoapoptosis of hepatocytes. Because we observed significant decreases in Chang cell lipoapoptosis with both iPLA₂ β and iPLA₂ γ siRNA, a single type of iPLA₂ may not

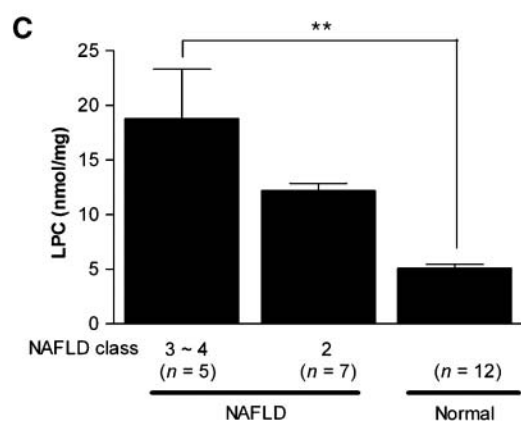
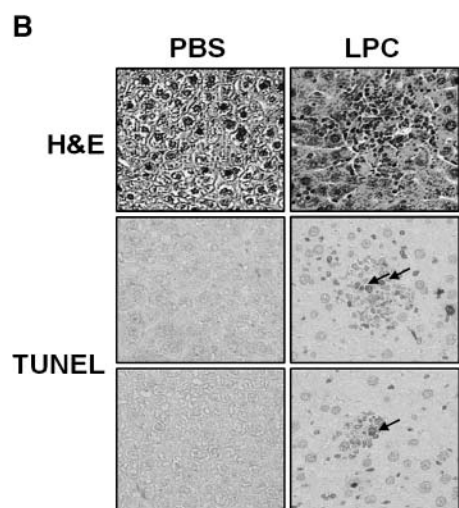
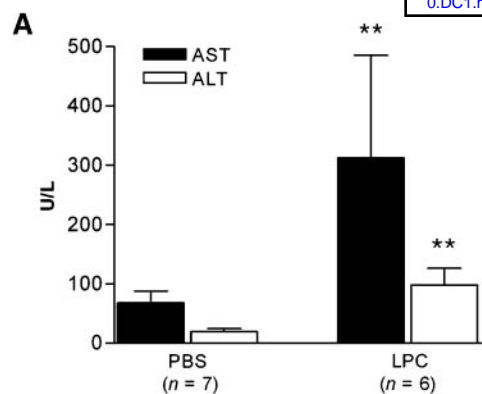


Fig. 7. LPC, liver injury in vivo, and nonalcoholic fatty liver disease (NAFLD). A: LPC was administered into the tail vein of ICR mice, and AST/ALT levels were measured. B: Histological grading of the liver injury was assessed according to a published criteria (38). TUNEL staining was done on the adjacent sections to identify apoptotic hepatocytes in the area of hepatitis. H&E, hematoxylin and eosin. Magnification $\times 100$. C: LPC content was measured in liver biopsy specimens from patients with NAFLD and in the nontumoral part of the liver from patients undergoing hepatic resection for metastatic colon cancer (Normal). The severity of NAFLD was assessed according to a published classification (2). Values shown are means \pm SD. ** $P < 0.01$.

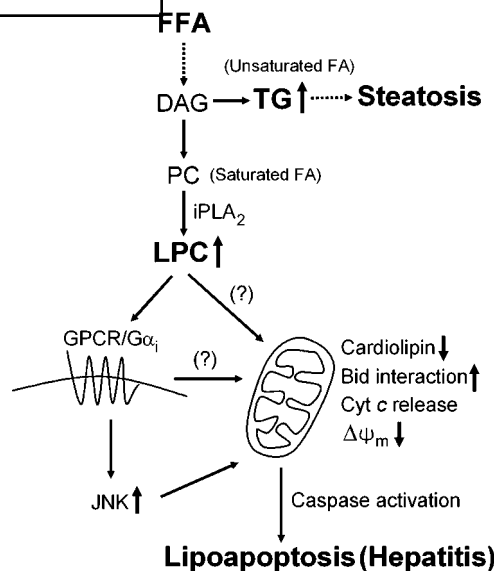


Fig. 8. Proposed model for NAFLD. DAG produced by the incorporation of FFA into the glycerol backbone may be converted to LPC or TG depending on the absolute/relative abundance of saturated/unsaturated fatty acids. Steatosis or hepatitis may occur when the TG pathway or the LPC pathway, respectively, prevails. LPC may induce apoptosis through the activation of G-protein-coupled receptor (GPCR/ $G\alpha_i$), mitochondrial events, and JNK.

be fully responsible for the production of LPC from FFAs. Further work will be necessary to elucidate the roles of specific iPLA₂ types in lipoapoptosis.

The role of PLA₂ in cell death/survival has been reported in diverse models of hypoxia, reperfusion injury, and reactive oxygen species damage (12, 13, 47, 48). Our results are similar to previous findings showing a significant role of iPLA₂ in hypoxic cell injury (12, 47); however, our findings are different from those results in that LPC appears to be an effector downstream of iPLA₂ activation. Our data that iPLA₂ activity was significantly (nearly 2-fold) increased by PA and that the increased activity was completely reversed by BEL are also similar to previous data that iPLA₂ activity was increased in the course of hypoxic cell death (12). The mechanism of the activation of iPLA₂ activity by PA is not clearly understood and may involve translocation to target organelles, displacement of inhibitor molecules by FFA-induced endoplasmic reticulum stress, or reactive oxygen species (12, 24, 49). Incomplete protection of PA-induced hepatocyte death by a combination of iPLA₂ β and iPLA₂ γ siRNAs or iPLA₂ inhibitors such as BEL and PACOCF₃ suggests a potential role of iPLA₂-independent mechanisms in the lipoapoptosis of hepatocytes. For instance, the role of fatty acid metabolites other than LPC, such as DAG and ceramide, cannot be totally eliminated, because we used mostly pharmacological inhibitors that could have overlapping substrate specificities.

Exogenous LPC has been reported to induce apoptosis (44, 50) and stimulate inflammatory cells (17). However, the proapoptotic role of endogenous LPC has not been reported, to our knowledge. As iPLA₂ does not have a

specificity toward PC, the roles of other lysophospholipids cannot be completely eliminated. However, in vivo concentrations of other phospholipids, such as phosphatidylethanolamine, phosphatidylglycerol, phosphatidylinositol, and phosphatidylserine, are around or less than one-tenth of that of PC (51, 52). Much higher in vivo concentrations and much stronger apoptotic activity of LPC compared with LPE, LPG, LPI, or LPS essentially eliminates the possibility that other minor lysophospholipids play significant roles in lipoapoptosis. Previous papers also showed obvious apoptotic activity of LPC, whereas that of other lysophospholipids has not been clearly demonstrated (44, 50). Products of PLA₂ released from PC together with LPC, such as arachidonic acid or its derivatives (10, 11), have diverse effects in vivo. Whereas dipalmitoyl-phosphatidic acid is predominantly produced by PA treatment (53), a certain amount of arachidonic acid may be produced by repeated deacylation and reacylation at the *sn*-2 position and may contribute the phenotypes associated with FFA excess. However, a recent paper showed much weaker activation of stress molecules such as JNK by a variety of unsaturated FFAs, including arachidonic acid, compared with saturated FFAs (54), consistent with our results suggesting that saturated FFAs exert much stronger cytotoxicity compared with unsaturated FFAs.

Intracellular events associated with LPC-induced apoptosis are not clearly defined. Recent papers reported that GPCRs mediate various actions of LPC (33, 34), but it remains controversial whether GPCRs are LPC receptors or mediate LPC actions indirectly. The inhibition of PA- or LPC-induced Chang cell apoptosis by PTX or a dominant-negative G α_i mutant (18) suggests that certain GPCR/G α_i is involved in apoptosis by endogenous or exogenous LPC (55). The effect of a dominant-negative G α_i mutant observed in this study is not mediated by lysophosphatidic acid (LPA), which could be produced from LPC by autotaxin (56), because Chang cell death by PA or LPC was not inhibited by Ki16425, an LPA₁/LPA₃ receptor antagonist (56), and LPA up to 50 μ M did not induce Chang cell death (M. S. Han et al., unpublished data). Furthermore, LPA is a well-known survival or growth factor and has been shown to protect cells from apoptosis (57).

Because GPCRs recognize extracellular ligands, LPC might be released to the extracellular space and bind to GPCRs (58). Instead, LPC might enter the receptor binding site in a lateral manner between transmembrane regions of the receptor without leaving the membrane (59), which is more consistent with the absence of the increase of LPC content in the culture supernatant after PA treatment. However, it is not proven whether such a model proposed for LPA is valid for LPC binding to its receptors. Downstream of receptor binding, we observed decreased cardiolipin content after PA treatment, consistent with a previous report (53). The PA-induced decrease in cardiolipin content could be attributable to the inhibition of CDP-DAG synthase, the rate-limiting step in cardiolipin biosynthesis, by LPC, as suggested previously (60).

Although a different mechanism, such as poor substrate availability of dipalmitoyl-phosphatidic acid for CDP-DAG synthase, has been proposed (53), the inhibition of lipoapoptosis and the reversal of the decrease in cardiolipin content by PLA₂ inhibitors downstream of phosphatidic acid support a role for LPC rather than dipalmitoyl-phosphatidic acid upstream of PLA₂. The loss of cardiolipin, a mitochondria-specific phospholipid that maintains mitochondrial membrane stability by binding to cytochrome *c* (61), is probably responsible for cytochrome *c* translocation, the loss of mitochondrial potential, and cell death after PA treatment. Besides receptor binding, LPC might directly induce mitochondrial events by recruiting Bid, a well-known initiator of apoptosis, to the mitochondrial membrane (35). JNK activation by saturated FFAs may also contribute to the cytochrome *c* release and lipoapoptosis in hepatocytes, whereas the contribution of JNK activation in the lipoapoptosis of Chang cells does not appear to be dominant. Although we focused on the mitochondrial events associated with LPC accumulation in the course of hepatocyte death by PA, previous papers showed the involvement of other organelles, such as endoplasmic reticulum and lysosome, in the lipoapoptosis of hepatocytes (5–8). Further work will be required to address the potential relationship between the iPLA₂/LPC pathway and endoplasmic reticulum stress or lysosomal permeabilization (7, 8, 24).

The inability of OA to induce lipoapoptosis is consistent with JNK activation by saturated FFAs but not by unsaturated fatty acids (54). The increased TG content by OA but not by PA and the further increase by combined OA/PA treatment suggest that an increased channeling of PA into TG plays a protective role against PA-induced lipoapoptosis. Although channeling into TG protects against lipotoxicity, excessive TG may impose deleterious effects on cellular function, such as impaired insulin production in pancreatic β -cells. An increased TG content in the liver leads to steatosis, which is one of the two main features of NAFLD. The preferential increase of TG content by unsaturated fatty acids might be attributable to the increased stability of lipid droplets containing a higher percentage of unsaturated acyl chains (37).

The death of hepatocytes constitutes another main feature of NAFLD, leading to inflammation, fibrosis, and ultimately cirrhosis (NASH). Cells may enter the steatosis track if the DAG \rightarrow TG pathway prevails or the death track if the DAG \rightarrow PC \rightarrow LPC pathway predominates, which might depend on the amount and types of available FFAs or the “second hit,” such as inflammatory cytokines (62, 63), that may determine the conversion of steatosis to hepatitis (Fig. 8). Consistent with our in vitro models, we observed increased LPC content in patients with NAFLD depending on the severity of the disease, yet we cannot completely eliminate the possibility that the difference in the methods of tissue sampling between NAFLD tissue and control tissue might have affected the results. The development of hepatitis and increased liver enzymes after LPC administration also provides another line of in vivo evidence supporting the role of LPC in liver injury.

Our results demonstrate that FFAs lead to steatosis or lipoapoptosis according to the absolute/relative abundance of FFAs, consistent with previous epidemiological data reporting more prevalent NASH in patients with a high intake of saturated fatty acids (64). Our data suggest the potential therapeutic values of the modulation of dietary fatty acids and inhibitors of PLA₂ and GPCR/Gα_i in the prevention/treatment of hepatocyte injury in NASH. However, caution is advised for PLA₂ and GPCR/Gα_i inhibitors as therapeutic agents, because they could have diverse biological effects on various tissues. **■**

This work was supported by the Nano/Bio Science Program (Grant 2004-00716) and 21C Frontier Functional Proteomics Project from the Korean Ministry of Science and Technology (Grant FPR05C1-160). M-S.L. is an awardee of Science Research Center Grant R01-2005-000-10326-0 from the Korea Science and Engineering Foundation. The authors are grateful to J. B. Kim at Seoul National University for helpful discussions. The authors thank S-D. Rhee and H-G. Cheon at Korea Research Institute of Chemical Technology for their kind provision of mice.

REFERENCES

- Mulhall, B. P., J. P. Ong, and Z. M. Younossi. 2002. Non-alcoholic fatty liver disease: an overview. *J. Gastroenterol. Hepatol.* **17**: 1136–1143.
- Matteoni, C. A., Z. M. Younossi, T. Gramlich, N. Boparai, Y. C. Liu, and A. J. McCullough. 1999. Nonalcoholic fatty liver disease: a spectrum of clinical and pathological severity. *Gastroenterology.* **116**: 1413–1419.
- Schattenberg, J. M., R. Singh, Y. Wang, J. H. Lefkowitz, R. M. Rigoli, P. E. Scherer, and M. Czaja. 2006. JNK1 but not JNK2 promotes the development of steatohepatitis in mice. *Hepatology.* **43**: 163–172.
- Shimabukuro, M., Y. T. Zhou, M. Levi, and R. H. Unger. 1998. Fatty acid-induced β cell apoptosis: a link between obesity and diabetes. *Proc. Natl. Acad. Sci. USA.* **95**: 2498–2502.
- Wei, Y., D. Wang, F. Topczewski, and M. J. Pagliassotti. 2006. Saturated fatty acids induce endoplasmic reticulum stress and apoptosis independently of ceramide in liver cells. *Am. J. Physiol. Endocrinol. Metab.* **291**: 275–281.
- Ji, J., L. Zhang, P. Wang, Y. M. Mu, X. Y. Zhu, Y. Y. Wu, H. Yu, B. Zhang, S. M. Chen, and X. Z. Sun. 2005. Saturated free fatty acid, palmitic acid, induces apoptosis in fetal hepatocytes in culture. *Exp. Toxicol. Pathol.* **56**: 369–376.
- Feldstein, A. E., N. W. Werneburg, Z. Li, S. F. Bronk, and G. J. Gores. 2006. Bax inhibition protects against free fatty acid-induced lysosomal permeabilization. *Am. J. Physiol. Gastrointest. Liver Physiol.* **290**: 1339–1346.
- Feldstein, A. E., N. W. Werneburg, A. Canbay, M. E. Guicciardi, S. F. Bronk, R. Rydzewski, L. J. Burgart, and G. J. Gores. 2004. Free fatty acids promote hepatic lipotoxicity by stimulating TNF-α expression via a lysosomal pathway. *Hepatology.* **40**: 185–194.
- Malhi, H., S. F. Bronk, N. W. Werneburg, and G. J. Gores. 2006. Free fatty acids induce JNK-dependent hepatocyte lipoapoptosis. *J. Biol. Chem.* **281**: 12093–12101.
- Schmid, P. C., E. Deli, and H. H. Schmid. 1995. Generation and remodeling of phospholipid molecular species in rat hepatocytes. *Arch. Biochem. Biophys.* **319**: 168–176.
- Schmid, P. C., I. Spimrova, and H. H. Schmid. 1995. Incorporation of exogenous fatty acids into molecular species of rat hepatocyte phosphatidylcholine. *Arch. Biochem. Biophys.* **322**: 306–312.
- Shinzawa, K., and Y. Tsujimoto. 2003. PLA₂ activity is required for nuclear shrinkage in caspase-independent cell death. *J. Cell Biol.* **163**: 1219–1230.
- Cauwels, A., B. Janssen, A. Waeytens, C. Cuvelier, and P. Brouckaert. 2003. Caspase inhibition causes hyperacute tumor

- necrosis factor-induced shock via oxidative stress and phospholipase A₂. *Nat. Immunol.* **4**: 387–393.
- Cnop, M., J. C. Hannaert, A. Hoorens, D. L. Elzirik, and D. G. Pipeleers. 2001. Inverse relationship between cytotoxicity of free fatty acids in pancreatic islet cells and cellular triglyceride accumulation. *Diabetes.* **50**: 1771–1777.
- Suk, K., S. Kim, Y-H. Kim, K-A. Kim, I. Chang, H. Yagita, M. Shong, and M-S. Lee. 2001. IFNγ/TNFα synergism as the final effector in autoimmune diabetes: a key role for STAT1/IRF-1 in pancreatic β-cell death. *J. Immunol.* **166**: 4481–4489.
- Cai, J., Y. Zhao, Y. Liu, F. Ye, Z. Song, H. Qin, S. Meng, Y. Chen, R. Zhou, X. Song, et al. 2007. Directed differentiation of human embryonic stem cells into functional hepatic cells. *Hepatology.* **45**: 1229–1239.
- Yan, J. J., J. S. Jung, J. E. Lee, J. Lee, S. O. Huh, H. S. Kim, K. C. Jung, J. Y. Cho, J. S. Nam, H. W. Suh, et al. 2004. Therapeutic effects of lysophosphatidylcholine in experimental sepsis. *Nat. Med.* **10**: 161–167.
- Winitz, S., S. K. Gupta, N-X. Qian, L. E. Heasley, R. A. Nemenoff, and G. L. Johnson. 1994. Expression of a mutant G_{i2}α subunit inhibits ATP and thrombin stimulation of cytoplasmic phospholipase A₂-mediated arachidonic acid release independent of Ca²⁺ and mitogen-activated protein kinase regulation. *J. Biol. Chem.* **269**: 1889–1895.
- Polyak, K., Y. Xia, J. L. Zweier, K. W. Kinzler, and B. Vogelstein. 1997. A model for p53-induced apoptosis. *Nature.* **389**: 300–305.
- Chang, I., N. Cho, S. Kim, J. Y. Kim, E. Kim, J-E. Woo, J. H. Nam, S. J. Kim, and M-S. Lee. 2004. Role of calcium in pancreatic islet cell death by IFNγ/TNFα. *J. Immunol.* **172**: 7008–7014.
- Lee, K. W., J. B. Park, J. J. Yoon, J. H. Lee, S. Y. Kim, H. J. Jung, S. K. Lee, S. J. Kim, H. H. Lee, D. S. Lee, et al. 2004. The viability and function of cryopreserved hepatocyte spheroids with different cryopreservation solutions. *Transplant. Proc.* **36**: 2462–2463.
- Tong, J. Z., O. Bernard, and F. Alvarez. 1990. Long-term culture of rat liver cell spheroids in hormonally defined media. *Exp. Cell Res.* **189**: 87–92.
- Nakagawa, T., S. Shimizu, T. Watanabe, O. Yamaguchi, K. Otsu, H. Yamagata, H. Inohara, T. Kubo, and Y. Tsujimoto. 2005. Cyclophilin D-dependent mitochondrial permeability transition regulates some necrotic but not apoptotic cell death. *Nature.* **434**: 652–658.
- Smani, T., S. I. Zakharov, P. Csutora, E. Leno, E. S. Trepakova, and V. M. Bolotina. 2004. A novel mechanism for the store-operated calcium influx pathway. *Nat. Cell Biol.* **6**: 113–120.
- Joshi, S. S., C. A. Kuszynski, M. Bakchi, and D. Bagchi. 2000. Chemopreventive effects of grape seed proanthocyanidin extract of Chang liver cells. *Toxicology.* **155**: 83–90.
- Obeid, L. M., C. M. Linardic, L. A. Karolak, and Y. A. Hannun. 1993. Programmed cell death induced by ceramide. *Science.* **259**: 1769–1771.
- Knoll, L. J., O. F. Schall, I. Suzuki, G. W. Gokel, and J. I. Gordon. 1995. Comparison of the reactivity of tetradecanoic acids, a triacsin, and unsaturated oximes with four purified *Saccharomyces cerevisiae* fatty acid activation proteins. *J. Biol. Chem.* **270**: 20090–20097.
- Tonnetti, L., M. C. Veri, E. Bonvini, and L. D'Adamio. 1999. A role for neutral sphingomyelinase-mediated ceramide production in T cell receptor-induced apoptosis and mitogen-activated protein kinase-mediated signal transduction. *J. Exp. Med.* **189**: 1581–1589.
- Ogretmen, B., B. J. Pettus, M. J. Rossi, R. Wood, J. Usta, Z. Szulc, A. Bielawska, L. M. Obeid, and Y. A. Hannun. 2002. Biochemical mechanisms of the generation of endogenous long chain ceramide in response to exogenous short chain ceramide in the A549 human lung adenocarcinoma cell line. *J. Biol. Chem.* **277**: 12960–12969.
- Eitel, K., H. Staiger, J. Rieger, H. Mischak, H. Brandhorst, M. D. Brendel, R. G. Bretzel, H. U. Haring, and M. Kellerer. 2003. Protein kinase C delta activation and translocation to the nucleus are required for fatty acid-induced apoptosis of insulin-secreting cells. *Diabetes.* **52**: 991–997.
- Finney, R. E., E. Nudelman, T. White, S. Bursten, P. Klein, L. L. Leer, N. Wang, D. Waggoner, J. W. Singler, and R. A. Lewis. 2000. Pharmacological inhibition of phosphatidylcholine biosynthesis is associated with induction of phosphatidylinositol accumulation and cytolysis of neoplastic lines. *Cancer Res.* **60**: 5204–5213.
- Balsinde, J., and E. A. Dennis. 1996. Bromoenol lactone inhibits magnesium-dependent phosphatidate phosphohydrolase and blocks triacylglycerol biosynthesis in mouse P388D1 macrophages. *J. Biol. Chem.* **271**: 31937–31941.
- Kabarowski, J. H. S., K. Zhu, L. Q. Le, O. N. Witte, and Y. Xu. 2001.

- Lysophosphatidylcholine as a ligand for the immunoregulatory receptor G2A. *Science*. **293**: 702–705.
34. Zhu, K., L. B. Baudhuin, G. Hong, F. S. Williams, K. L. Cristina, J. H. S. Kabarowski, O. N. Witte, and Y. Xu. 2001. Sphingosylphosphorylcholine and lysophosphatidylcholine are ligands for the G protein-coupled receptor GPR4. *J. Biol. Chem.* **276**: 41325–41335.
35. Goonesinghe, A., E. S. Mundy, M. Smith, R. Khosravi-Far, J. C. Martinou, and M. D. Esposti. 2005. Pro-apoptotic Bid induces membrane perturbation by inserting selected lysolipids into the bilayer. *Biochem. J.* **387**: 109–118.
36. Fang, X., S. Gibson, M. Flowers, T. Furui, R. C. Bast, and G. B. Mills. 1997. Lysophosphatidylcholine stimulates activator protein 1 and the c-Jun N-terminal kinase activity. *J. Biol. Chem.* **272**: 13688–13689.
37. Listenberger, L. L., X. Han, S. E. Lewis, S. Cases, R. V. Farese, D. S. Ory, and J. E. Schaffer. 2003. Triglyceride accumulation protects against fatty acid-induced lipotoxicity. *Proc. Natl. Acad. Sci. USA*. **100**: 3077–3082.
38. Ishak, K., A. Baptista, L. Bianchi, F. Callea, J. D. Groote, F. Gudat, H. Denk, V. Desmet, G. Korb, R. N. M. MacSween, et al. 1995. Histological grading and staging of chronic hepatitis. *J. Hepatol.* **22**: 696–699.
39. Lee, J.-S., and S. S. Thorgeirsson. 2002. Functional and genomic implications of global gene expression profiles in cell lines from human hepatocellular cancer. *Hepatology*. **35**: 1134–1143.
40. Fernandez-Martinez, A., B. Molla, R. Mayoral, L. Boaca, M. Casado, and P. Martin-Sanz. 2006. Cyclo-oxygenase 2 expression impairs serum-withdrawal-induced apoptosis in liver cells. *Biochem. J.* **398**: 371–380.
41. Paumen, M. B., Y. Ishida, M. Muramatsu, M. Yamamoto, and T. Honjo. 1997. Inhibition of carnitine palmitoyltransferase I augments sphingolipid synthesis and palmitate-induced apoptosis. *J. Biol. Chem.* **272**: 3324–3329.
42. Listenberger, L. L., D. S. Ory, and J. E. Schaffer. 2001. Palmitate-induced apoptosis can occur through a ceramide-independent pathway. *J. Biol. Chem.* **276**: 14890–14895.
43. Hardy, S., W. El-Assaad, E. Przybytkowski, E. Joly, M. Prentki, and Y. Langelier. 2003. Saturated fatty acid-induced apoptosis in MDA-MB-231 breast cancer cells. *J. Biol. Chem.* **278**: 31861–31870.
44. Takahashi, M., H. Okazaki, Y. Ogata, K. Takeuchi, U. Ikeda, and K. Shimada. 2002. Lysophosphatidylcholine induces apoptosis in human endothelial cells through a p38-mitogen-activated protein kinase-dependent mechanism. *Atherosclerosis*. **161**: 387–394.
45. Kinsey, G. R., B. S. Cummings, C. S. Beckett, G. Saavedra, W. Zhang, J. McHowat, and R. G. Schnellmann. 2005. Identification and distribution of endoplasmic reticulum iPLA₂. *Biochem. Biophys. Res. Commun.* **327**: 287–293.
46. Jenkins, C. M., D. J. Mancuso, W. Yan, H. F. Sims, B. Gibson, and R. W. Gross. 2004. Identification, cloning, expression, and purification of three novel human calcium-independent phospholipase A₂ family members possessing triacylglycerol lipase and acylglycerol transacylase activities. *J. Biol. Chem.* **279**: 48968–48975.
47. Williams, S. D., and R. A. Gottlieb. 2002. Inhibition of mitochondrial calcium-independent phospholipase A₂ (iPLA₂) attenuates mitochondrial phospholipid loss and is cardioprotective. *Biochem. J.* **362**: 23–32.
48. Yellaturu, C. R., and G. N. Rao. 2003. A requirement for calcium-independent phospholipase A₂ in thrombin-induced arachidonic acid release and growth in vascular smooth muscle cells. *J. Biol. Chem.* **278**: 43831–43837.
49. Martinez, J., and J. J. Moreno. 2001. Role of Ca²⁺-independent phospholipase A₂ on arachidonic acid release induced by reactive oxygen species. *Arch. Biochem. Biophys.* **392**: 257–262.
50. Masamune, A., Y. Sakai, A. Satoh, M. Fujita, M. Yoshida, and T. Shimosegawa. 2001. Lysophosphatidylcholine induces apoptosis in AR42J cells. *Pancreas*. **22**: 75–83.
51. Philips, G. B., and J. T. Dodge. 1967. Composition of phospholipids and of phospholipid fatty acids of human plasma. *J. Lipid Res.* **8**: 676–681.
52. Okita, M., D. C. Gaudette, G. B. Mills, and B. J. Holub. 1997. Elevated levels and altered fatty acid composition of plasma lysophosphatidylcholine (lysoPC) in ovarian cancer patients. *Int. J. Cancer*. **71**: 31–34.
53. Ostrander, D. B., G. C. Sparagna, A. A. Amoscato, J. B. McMillin, and W. Dowhan. 2001. Decreased cardiolipin synthesis corresponds with cytochrome c release in palmitate-induced cardiomyocyte apoptosis. *J. Biol. Chem.* **276**: 38061–38067.
54. Solinas, G., W. Naugler, F. Galimi, M.-S. Lee, and M. Karin. 2006. Saturated fatty acids inhibit induction of insulin gene transcription via JNK-mediated phosphorylation of insulin receptor substrates. *Proc. Natl. Acad. Sci. USA*. **103**: 16454–16459.
55. Lin, P., and R. D. Ye. 2003. The lysophospholipid receptor G2A activates a specific combination of G proteins and promotes apoptosis. *J. Biol. Chem.* **278**: 14379–14386.
56. Hama, K., J. Aoki, M. Fukaya, Y. Kishi, T. Sakai, R. Suzuki, H. Ohta, T. Yamori, M. Watanabe, J. Chun, et al. 2004. Lysophosphatidic acid and autotaxin stimulate cell motility of neoplastic and non-neoplastic cells through LPA1. *J. Biol. Chem.* **279**: 17634–17639.
57. Umezue-Goto, M., Y. Kishi, A. Taira, K. Hama, N. Dohmae, K. Takio, T. Yamori, G. B. Mills, K. Inoue, J. Aoki, et al. 2002. Autotaxin has lysophospholipase D activity leading to tumor cell growth and motility by lysophosphatidic acid production. *J. Cell Biol.* **158**: 227–233.
58. van den Besselaar, A. M. H. P., B. de Kruijff, H. van den Bosch, and L. L. M. van Deenen. 1979. Transverse distribution and movement of lysophosphatidylcholine in sarcoplasmic reticulum membranes as determined by ¹³C-NMR and lysophospholipase. *Biochim. Biophys. Acta*. **555**: 193–199.
59. Xie, Y., T. C. Gibbs, and K. E. Meier. 2002. Lysophosphatidic acid as an autocrine and paracrine mediator. *Biochim. Biophys. Acta*. **1582**: 270–281.
60. Xu, F. Y., W. A. Taylor, and G. M. Match. 1998. Lysophosphatidylcholine inhibits cardiolipin biosynthesis in H9c2 cardiac myoblast cells. *Arch. Biochem. Biophys.* **349**: 341–348.
61. Ott, M., J. D. Robertson, V. Gogvadze, B. Zhivotovsky, and S. Orrenius. 2002. Cytochrome c release from mitochondria proceeds by a two-step process. *Proc. Natl. Acad. Sci. USA*. **99**: 1259–1263.
62. Ryden, M., E. Arvidsson, L. Blomqvist, L. Perbeck, A. Dicker, and P. Arner. 2004. Targets for TNF- α -induced lipolysis in human adipocytes. *Biochem. Biophys. Res. Commun.* **318**: 168–175.
63. Yang, S. Q., H. Z. Lin, M. D. Lane, M. Clemens, and A. M. Diehl. 1997. Obesity increases sensitivity to endotoxin liver injury: implications for the pathogenesis of steatohepatitis. *Proc. Natl. Acad. Sci. USA*. **94**: 2557–2562.
64. Musso, G., R. Gambino, F. De Michieli, M. Cassader, M. Rizzetto, M. Durazzo, E. Faga, B. Silli, and G. Pagano. 2003. Dietary habits and their relations to insulin resistance and postprandial lipemia in nonalcoholic steatohepatitis. *Hepatology*. **37**: 909–916.